

FROM * PRICE

House & Land Package



FIXED PRICE
GUARANTEE

60K
worth of inclusions
at no extra cost

STRUCTURAL
LIFETIME
GUARANTEE

MUNDI 22 | EMERGE RANGE

\$675,596*

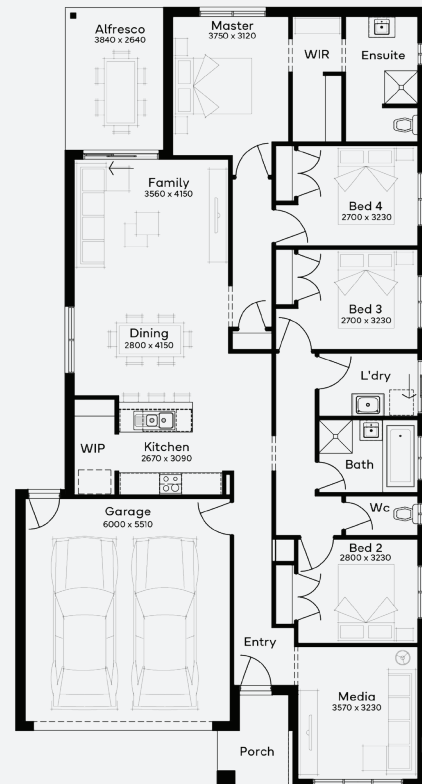
Lot 39 , Yarrowonga
The Willows Estate (808m²)



FIRST HOME OWNERS - \$665,596

INCLUSIONS

- + Generous Site Costs
- + Developer & council requirements
- + Photovoltaic panels with inverter
- + Feature front entry door
- + Colorbond Sectional garage door & remote controls
- + Floor coverings to entire house
- + 20mm Stone benchtops to kitchen
- + Quality stainless steel cooktop & oven
- + Ducted Heating
- + Plus much more!



For enquiries please contact: **Anita Bourke - 0436 118 591**

simonds.com.au



*From pricing is based on standard plan, builders preferred siting, site costs allowance, and is subject to extreme site changes beyond our reasonable control and unknown at the time of print. All packages are subject to Developer and Council approval. Package Price does not include stamp duty, government, legal or bank charges. Community Infrastructure Levy and Asset Protection Permit are not included in pricing and is to be arranged by the client directly with the Developer (if applicable). Any alterations may incur additional charges. Confirm land price and availability prior to purchase. Simonds reserves the right to withdraw or amend pricing, inclusions and promotion at any time without notice. *Please refer to the terms and conditions at www.simonds.com.au/terms-and-conditions. This package applies to VIC - Emerge range only. Please speak with your sales consultant for further details. Pricing is current at 14/05/2026.