



BAYVIEW 26

House & Land Package



\$797,365*

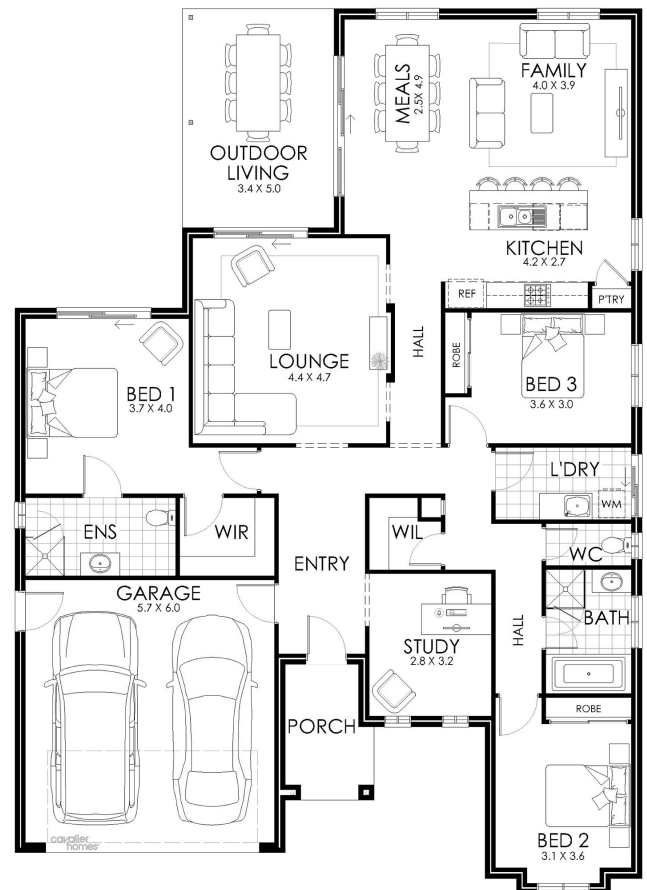
Lot 10 The Willows Estate
Yarrawonga

Lot Size: 806m²

House Size: 243.78m²

List of Inclusions:

- Lifestyle inclusions
- Colorbond steel roof
- Ducted Heating & Cooling
- Quality Westinghouse appliances
- Carpet & tiles throughout
- Site Cost allowance
- Brick over all window/door openings
- Colour selection appointment with interior design consultant
- Breathtaking views
- Sought after location



**cavalier
homes®**
REAL HOMES.. REAL PEOPLE.

Find Out More

Contact: Matthew
Mastroianni
0499 869 916

*All prices, images, inclusions and plans shown in this document and any Display Home vary throughout Australia and over time and are provided as a guide only. Unless otherwise stated in writing, new home prices do not include furniture, decorator items, driveways, paths, landscaping, swimming pools, letterboxes, fencing, security systems, vacuum systems, telephone, intercom and communication systems, air conditioning, heating systems and or connection fees. All Cavalier Homes designs are copyright. None of the information provided in this brochure forms part of any contract with Cavalier Homes and you should not rely upon any information contained in this brochure in deciding whether to enter into any contract with Cavalier Homes. Please refer to the particulars of your Contract for the specific design and details of any inclusions. Package reference number 32038912040. Cavalier Homes Goulburn Valley is a registered building practitioner number CDB-U 51879 (VIC) 316535C (NSW).