



**The Willows Estate**  
Hendy Way, Yarrawonga  
Lot 43

**Facade:** Terra 14m

**House:** 21.93 sq **Land:** 783 m2

3 2 2 2

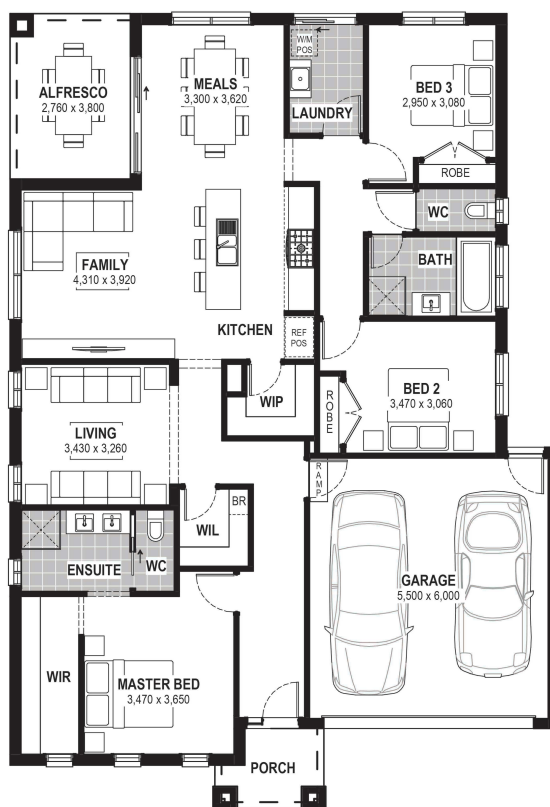
## Carson 22

### Inclusions

- Truecore Steel House Frame
- Colorbond Steel Roof (with Sarking)
- High Performance (uPVC) Double Glazed Safety Glass Windows & Doors
- 7 Star Energy Efficient to all orientations
- 7 x 440w Panels & 3KW Inverter (single phase)
- Bushfire Compliance to BAL 12.5
- 900mm Appliances
- 50 Year Structural Guarantee
- 900mm Rangehood & Upright Cooker
- Overhead Cupboards to Kitchen
- Big 40th Birthday Sale

### Contact:

Kelly Ferguson  
0499 002 583  
houseandland@jgking.com.au



\*Conditions apply. Speak to your New Home Advisor for further details