



The Willows Estate
Baird Street, Yarrowonga
Lot 115

Facade: Apollo

House: 20.57 sq **Land:** 684 m2

 4
  2
  2
  2

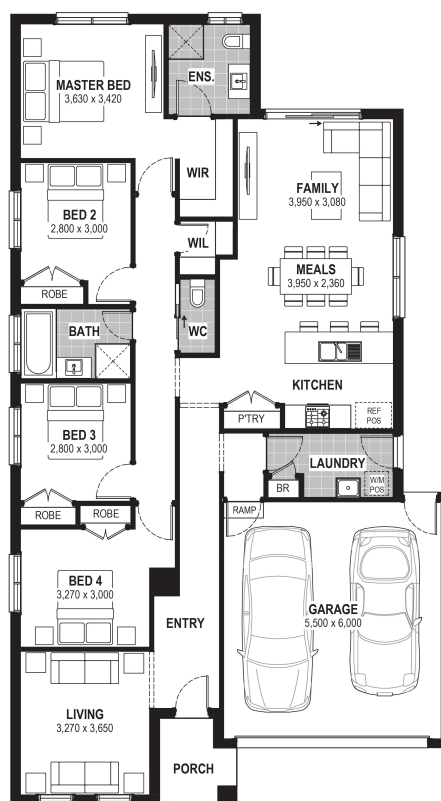
Coral 21

Inclusions

- Truecore Steel House Frame
- Colorbond Steel Roof (with Sarking)
- High Performance (uPVC) Double Glazed Safety Glass Windows & Doors
- 7 Star Energy Efficient to all orientations
- 7 x 440w Panels & 3KW Inverter (single phase)
- Bushfire Compliance to BAL 12.5
- 50 Year Structural Guarantee
- Range of stylish colour schemes
- Overhead Cabinetry to Kitchen
- Tiled Shower Bases
- Laundry Cabinetry
- Remote Garage Door with Openers
- Cooling
- Laminate Flooring & Carpet Throughout
- Site Costs Allowance Included
- Electric Package Option (Up / Art Collection)
- Big 40th Birthday Sale

Contact:

Kelly Ferguson
0499 002 583
houseandland@jgking.com.au



*Conditions apply. Speak to your New Home Advisor for further details