



The Willows Estate
Baird Street, Yarrowonga
Lot 120

Facade: Aspen 14m

House: 28.26 sq **Land:** 687 m2

4 2 3 2

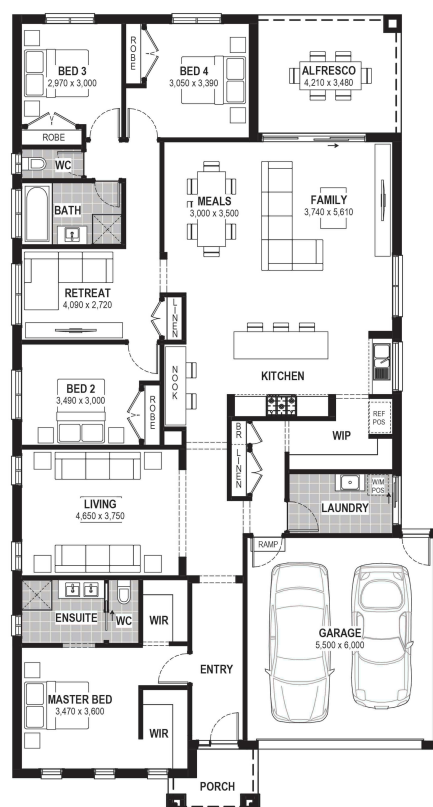
Austin 28

Inclusions

- Truecore Steel House Frame
- Colorbond Steel Roof (with Sarking)
- High Performance (uPVC) Double Glazed Safety Glass Windows & Doors
- 7 Star Energy Efficient to all orientations
- 7 x 440w Panels & 3KW Inverter (single phase)
- Bushfire Compliance to BAL 12.5
- 50 Year Structural Guarantee
- 900mm Rangehood & Upright Cooker
- Overhead Cupboards to Kitchen
- 2550mm Ceiling Height
- 900mm Appliances
- Big 40th Birthday Sale
- Caesarstone Benchtops to Kitchen & Vanities
- Concrete Driveway up to 35qm
- Downlight Allowance
- Laminate Flooring & Carpet Throughout
- Cooling

Contact:

Glenn Wilson
0436698722
houseandland@jgking.com.au



*Conditions apply. Speak to your New Home Advisor for further details