



The Willows Estate
Hendy Way, Yarrawonga
Lot 44

Facade: Clairmont

House: 21.93 sq **Land:** 779 m2

3 2 2 2

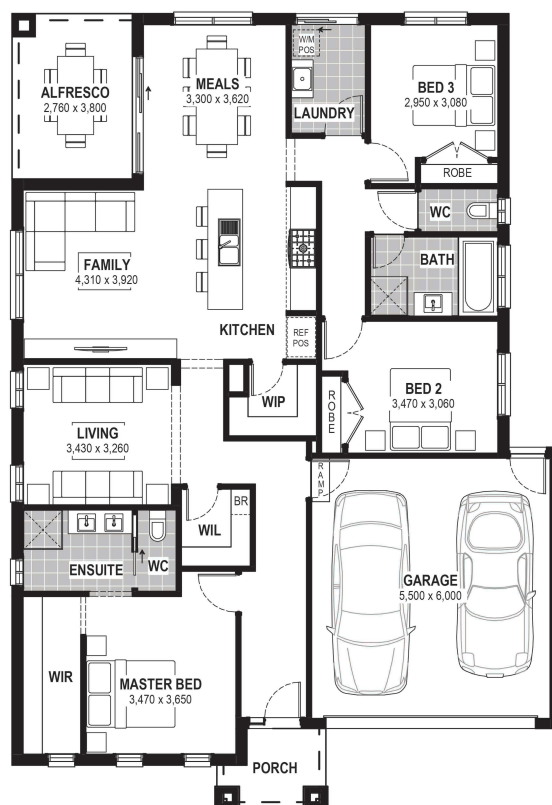
Carson 22

Inclusions

- Bluescope Steel House Frame
- Colorbond Roof with Sarking
- 7 Star Energy Efficient
- European-styled (uPVC) Double Glazed Windows & Doors
- 900mm Rangehood & Upright Cooker
- Overhead Cupboards to Kitchen
- Professional Colour Consultation
- Tiled Shower Bases
- Window Locks to all Openable Windows
- Remote Garage Door with Openers
- Bushfire Compliance up to BAL 12.5
- 50 Year Structural Guarantee
- Cooling
- Laminate Flooring & Carpet Throughout
- Site Costs Allowance Included

Contact:

Kelly Ferguson
0499 002 583
houseandland@jgking.com.au



*Conditions apply. Speak to your New Home Advisor for further details