



**The Willows Estate**  
Hendy Way, Yarrowonga  
Lot 43

**Facade:** Tide

**House:** 21.09 sq **Land:** 783 m2

4  
 2  
 2  
 2

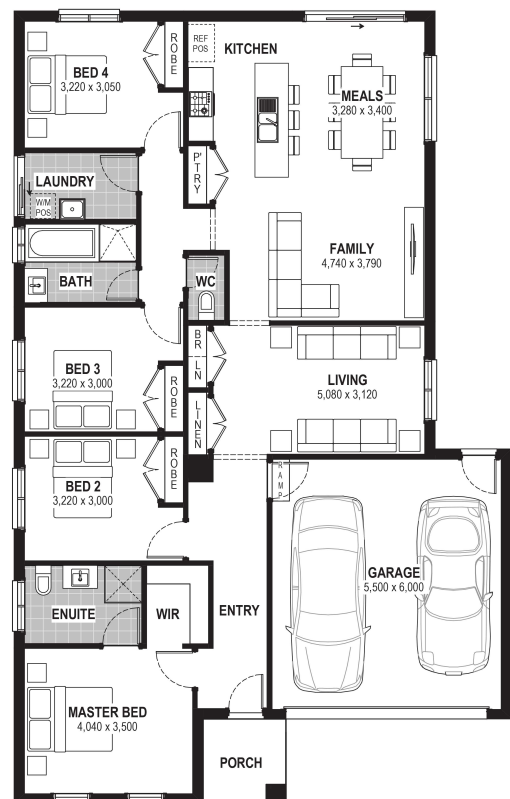
## Midnight 21

### Inclusions

- Bluescope Steel House Frame
- Colorbond Roof with Sarking
- 7 Star Energy Efficient
- European-styled (uPVC) Double Glazed Windows & Doors
- Tiled Splashback to Kitchen
- Range of Colour Schemes
- Flyscreens with Aluminium Mesh
- Remote Garage Door with Openers
- Bushfire Compliance up to BAL 12.5
- 50 Year Structural Guarantee
- Cooling
- Laminate Flooring & Carpet Throughout
- Site Costs Allowance Included

### Contact:

Kelly Ferguson  
0499 002 583  
houseandland@jgking.com.au



\*Conditions apply. Speak to your New Home Advisor for further details