

House & Land Package



Lot 8 Jock Close Willow Estate, Yarrowonga

Northcliffe 29 Direct



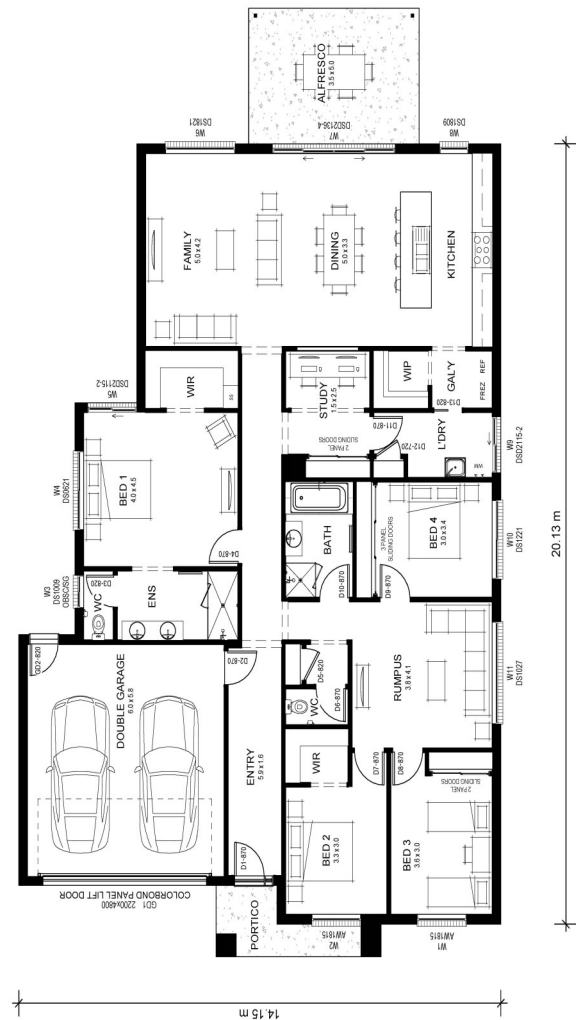
House & Land Package From

\$774,889

This House & land package has been uniquely put together to maximise the block, light and orientation.

Features Include:-

- House + Land
- Eastport Facade
- Ducted heating & cooling
- Floor coverings throughout
- Quality custom made kitchen
- 900mm stainless steel cooking appliances
- Stainless steel dishwasher
- Semi-frameless shower screens
- Powder coated windows, screens & locks
- Floor drains to all wet areas
- LED Downlights throughout
- TV points, antenna & NBN connection
- Plaster lined portico & alfresco with concrete
- Solar hot water & booster
- Panel lift garage door with remotes
- Colorbond roof with sisalation



Please note: This price is subject to soil test, site, survey and energy rating.

Contact: Jackie Stevens
 Jackie.stevens@hadar.com.au
 M: 0431 483 456 P: 03 5743 2066

Hadar